

DENNIS A. BEEBE
 ARCHITECT, P.A.
 925 TRUMAN AVE.
 KEY WEST FLORIDA
 U.S.A. 33940
 PHONE: 305-296-8885

All Drawings, Specifications and related documents are the copyright property of the Architect and must be returned on request.
 Drawings, Specifications and related documents are for use on this Project only and use or reproduction of a part or whole is forbidden without the Architect's written permission.
 This drawing is not to be used for construction until sealed and signed by the Architect.

Owen Trepanier & Associates
 PLANNER
 Key West, Florida
 Phone: 305.744.0085

NO.	ISSUED FOR:	DATE
1	HARC COMMENTS	1/22/09

DRAWING TITLE:

SITE & FIRST FLOOR PLANS

PROJECT:

Southern Gables
 716-718 South St.
 Key West, Fla.

SCALE: 1/8"=1'-0"
 DRAWN: D.A.B.
 CHECK: D.A.B. **A-1**
 JOB No: 08.02
 DATE: 10/20/08

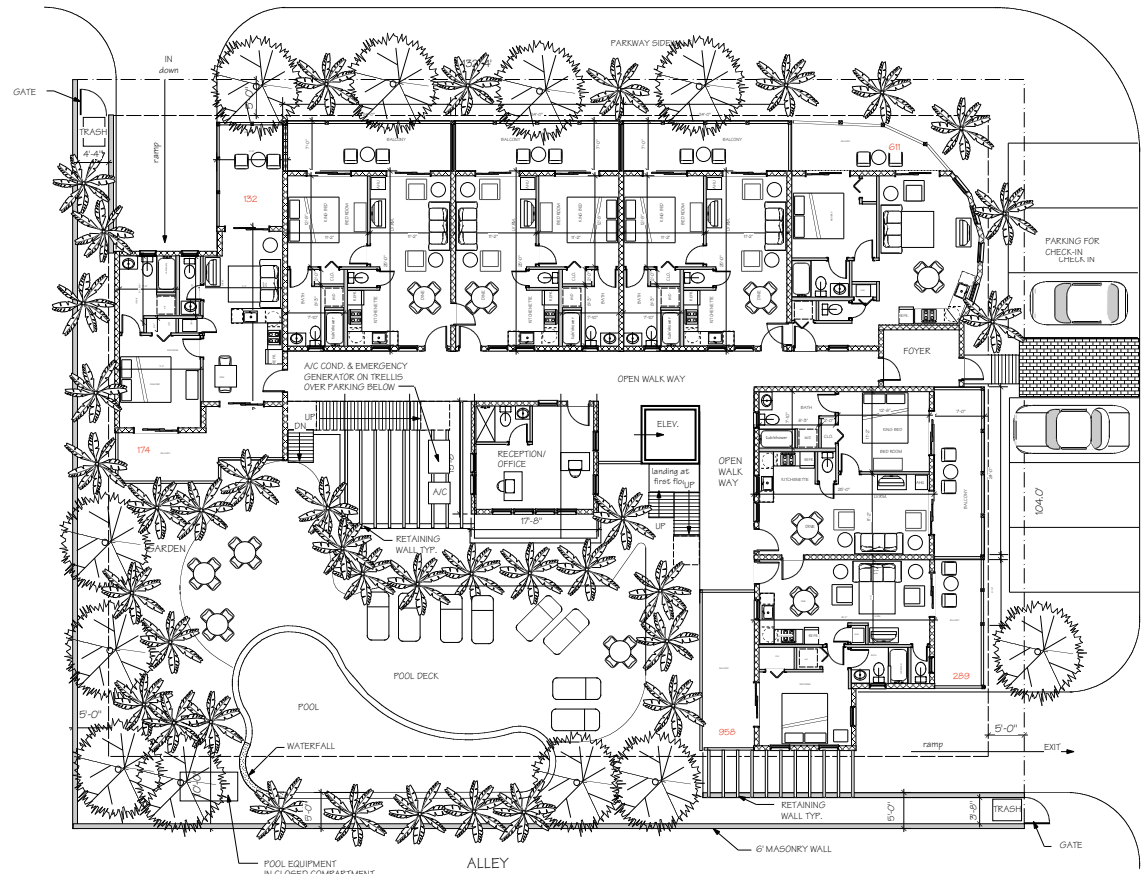
SITE DATA

LOT SIZE = 13743 SF
 BLDG. COVERAGE = 6872 SQ. FT.
 50% BUILDING COVERAGE
 17 UNITS @ 600 SQ. FT. EA.
 18 PARKING SPACES
 BLD. COVER 50%
 IMP. SURFACE 60%

FLOOR AREA

ENCLOSED CONDITIONED SPACE:
 1ST FLOOR = 4477 SQ. FT.
 2ND FLOOR = 4485 SQ. FT. /2 = 2243 SQ. FT.
 3RD FLOOR = 2016 SQ. FT.
DECKS & WALKWAYS:
 1ST FLOOR = 2164 SQ. FT.
 2ND FLOOR = 2150 SQ. FT. /2 = 1075 SQ. FT.
 3RD FLOOR = 913 SQ. FT.

SOUTH STREET



FIRST LEVEL
 7 units

